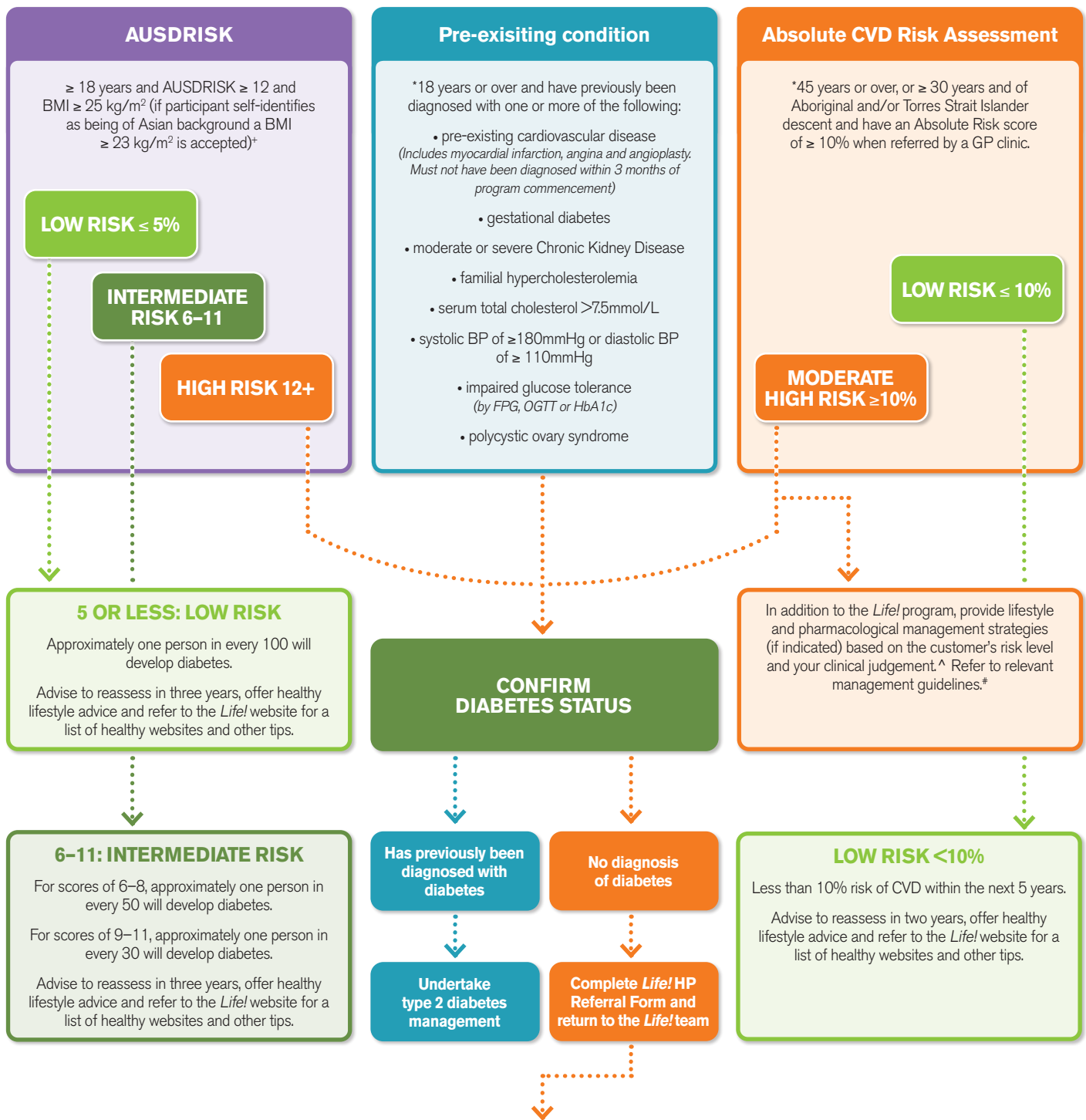


CUSTOMER ELIGIBILITY AND REFERRAL PATHWAY

The customer must fit at least one of the following criteria to be eligible for the *Life!* program:



- The AUSDRISK is available at lifeprogram.org.au/for-health-professionals/
- The Absolute CVD Risk Assessment is available at lifeprogram.org.au/for-health-professionals/
- The *Life!* referral form is available from lifeprogram.org.au/for-health-professionals/



* The *Life!* program is available for Victorian residents. Participants whose postcode is listed in the Acceptable Non-Victorian Regions (www.lifeprogram.org.au/gp) are considered eligible for the *Life!* program.

^ If you would like to explain the concept of absolute risk to your patient, please refer to the consumer booklet Know your heart and stroke risk available at: www.diabetesaustralia.com.au, www.kidney.org.au, www.strokefoundation.com.au and www.heartfoundation.org.au.

Management recommendations are currently available across separate guidelines. Useful websites include www.diabetesaustralia.com.au, www.kidney.org.au, www.strokefoundation.com.au and www.heartfoundation.org.au.

+ Asian background includes three distinct sub-regions (Parliament of Australia, 1997): Northeast Asia (Mainland China, Hong Kong, Japan, Korea, Taiwan); Southeast Asia (Brunei, Cambodia, Indonesia, Laos, Malaysia, Burma (Myanmar), the Philippines, Singapore, Thailand, Vietnam); and Southern Asia (Afghanistan, Bangladesh, India, Pakistan, Sri Lanka, Nepal).